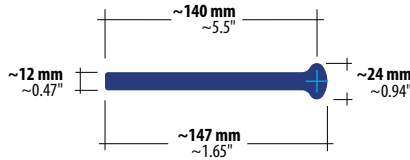
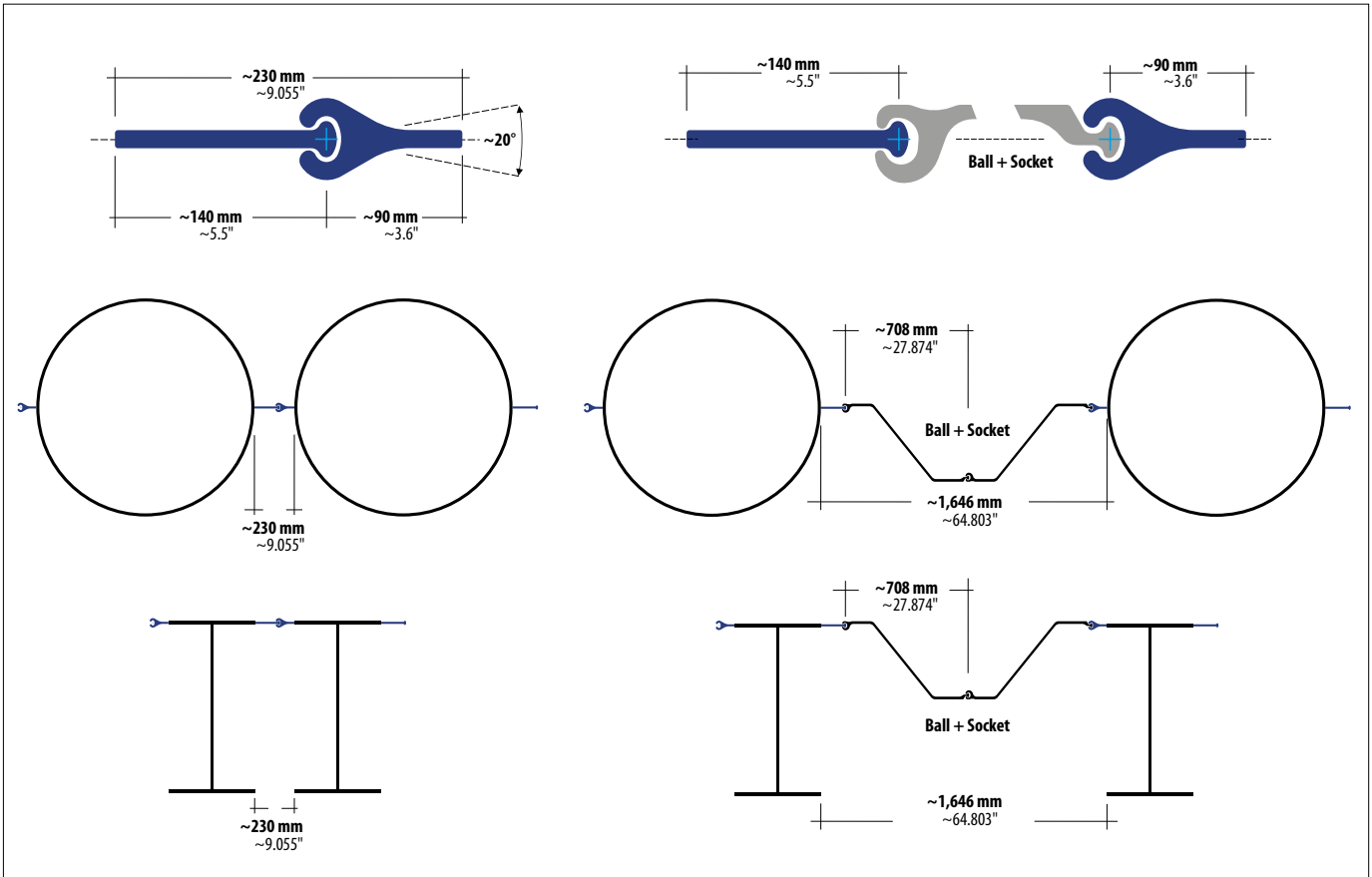
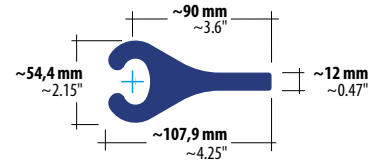


M140



F90



## Connectors M140, F90



### Applications

Pipe pile steel walls. Pipe pile / Ball + Socket combined steel walls  
 H pile steel walls. H pile / Ball + Socket combined steel walls

### Properties

Steel grade:	S355J2	
Standard lengths:	8 m, 11.8 m	26.2 ft, 38.7 ft, hot rolled
Steel thickness:	12 mm	0.47"
Weight M140:	14.77 kg/m	9.92 lbs/ft
Weight F90:	18.42 kg/m	12.38 lbs/ft
Max. tensile strength:	2,128 kN/m	12.151 kips/inch

SteelWall connectors generally comply with the European standards and are manufactured by certified steel processing companies. All figures are approximate and may vary. Bar twists are possible up to 0.025" per foot (2 mm per meter). Tolerance of steel thickness  $\pm 0.04"$  ( $\pm 1$  mm). Length tolerance up to  $\pm 7.9"$  ( $\pm 200$  mm). Degree details refer to the connector bar axes. We reserve the right to make technical changes. We refer to DIN EN 12063. Please check the sheet pile interlocks with a physical sample section of the desired connector for compatibility.

SteelWall ISH GmbH  
 Tassilostr. 21  
 82166 Gräfelfing  
 Germany  
 E-mail: info@steelwall.eu

SteelWall US, Humphrey Chang  
 US sales line 8:30 am to 4:30 pm (Arizona time)  
 Toll free 1(888) 309 2250  
 Fax: 1(888) 743 7712  
 E-mail: chang@steelwallus.com

Australia  
 Caribbean  
 New Zealand  
 North America  
 South East Asia

Copyright by  
 SteelWall ISH GmbH  
 2023-Sep-19  
[steelwallus.com](http://steelwallus.com)